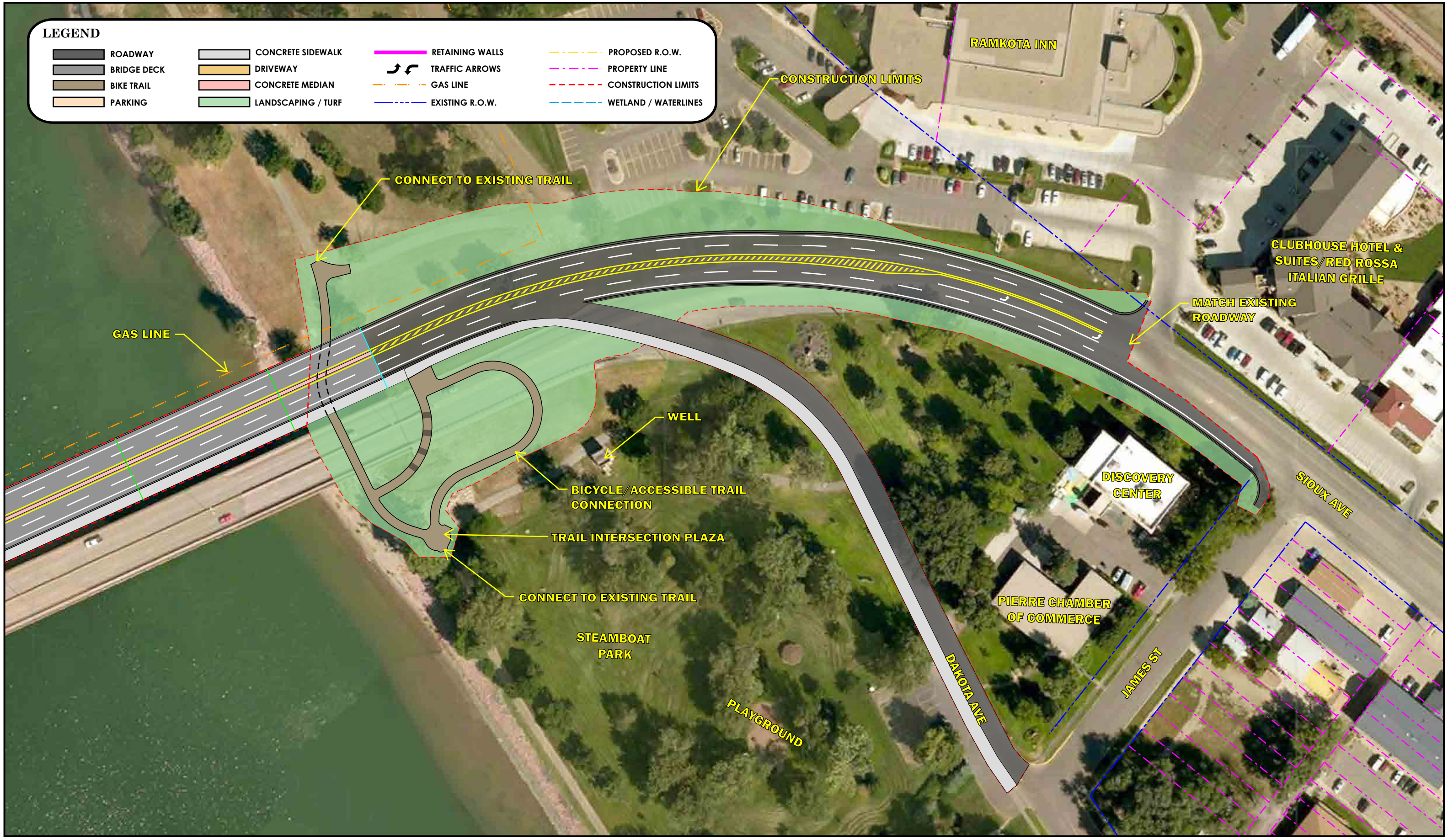


**LEGEND**

- |   |             |   |                    |   |                 |   |                      |
|---|-------------|---|--------------------|---|-----------------|---|----------------------|
|  | ROADWAY     |  | CONCRETE SIDEWALK  |  | RETAINING WALLS |  | PROPOSED R.O.W.      |
|  | BRIDGE DECK |  | DRIVEWAY           |  | TRAFFIC ARROWS  |  | PROPERTY LINE        |
|  | BIKE TRAIL  |  | CONCRETE MEDIAN    |  | GAS LINE        |  | CONSTRUCTION LIMITS  |
|  | PARKING     |  | LANDSCAPING / TURF |  | EXISTING R.O.W. |  | WETLAND / WATERLINES |



**US14/US83/SD34 MISSOURI RIVER BRIDGE REPLACEMENT STUDY**

**OPTION N1.1A  
DAKOTA AVENUE ONE-WAY SLIP RAMP**

JUNE 19, 2014

